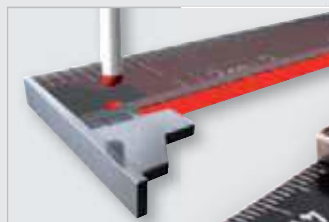


Wiha Longlife® Plus Composite.

Maximum flexural strength.



Wiha Longlife® Plus Composite.

- **Extremely rigid!**
 - Absorbs bending forces
 - Minimises risk of breakage
- **Extremely durable!**
 - No swelling with water contact
 - Resistant against many chemicals
- **Lasts up to 10 times longer!**
 - Rigidity ensured by longitudinal glass fibres
 - Weatherproof and temperature-resistant plastic
 - Wear-resistant joints
 - Metal ends cannot be lost (protective function)

Longlife® Plus Composite redefines measuring with folding rulers. With a very high level of rigidity as known from high-grade beech wood rulers, this folding ruler

features increased measuring precision: precision class II has only been achieved until now by metal rulers and measuring tapes.

LongLife Plus Composite



NEW

410 2005 Longlife® Plus Composite, folding ruler, 2 m, 10 segments. With metal ends.

Material: Composite design: two top layers made of longitudinal glass fibres absorb bending forces and ensure more rigidity than wooden rules. No swelling with water contact, resistant to chemicals.

Joints: Play-free, wear-free and dirt-resistant joint with spring pin for constant tension. Tight 90° and 180° latching of all joints.

Scale: Red/black version: Deep-embossed white scale in 1 mm increments
Grey/white version: Deep-embossed black scale in 1 mm increments, every 10 cm is marked in red

Accuracy: CE conformity, EU standard accuracy class II.

Extra: Metal ends which cannot be lost on the first and last segment. Readable from both sides through a second, backwards running scale (Recto Verso).



NEW

410 ... VH Sales counter display LongLife® Plus Composite folding rulers. Acrylglass displays with 20 pieces (2 m).

Order-No.	Scale	Color	Length (cm)	Quantity
37067	15	red/black	128	10
37309	15	grey/white	128	10

Order-No.	Content	Quantity
37145	410 2005 4	20 Longlife® Plus Composite, 2 m, red/black
37309	410 2005 5	20 Longlife® Plus Composite, 2 m, grey/white

Wiha fibre-glass-reinforced folding rulers.

Perfection up to 2 m in length.



Often emulated but never surpassed – the Longlife Plus folding ruler: has a long service life and is accurate and easy to use.



The world's first folding ruler made of high-quality fibre-glass material was developed and manufactured in 1968, and since then has been successfully marketed under the "Longlife" name.

Its characteristic joint with perfect long-life characteristics is still unique today.

The Polyamide reinforced with 30% fibre-glass makes the Longlife® folding ruler water resistant and scratch and score-proof.

Compared to wooden folding rulers a substantially higher service life is attained.

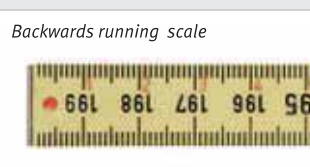
A deep embossed, precise scale on every segment contributes to the excellent performance characteristics.



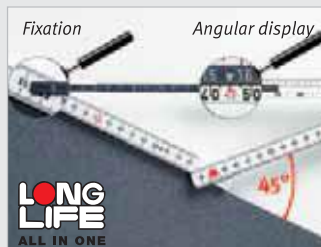
Joints



Metal ends



Backwards running scale



Fixation

Angular display

Angle gauge



Wiha fibre-glass-reinforced folding rulers.

- **Permanent – Longlife**
 - no swelling from contact with water!
 - distinctly longer service life compared to wooden folding ruler
 - resistant to chemicals, washable
- **Longlife Plus**
 - red joint bodies for improved legibility
 - wear-resistant metal ends
 - backwards running scale
- **Longlife All in One**
 - angle measurement function
 - depth measurement function
- **Exact**
 - CE conformity and Swiss precision for all rulers

Wiha fibre-glass-reinforced folding rulers.

2 m of perfection.

Longlife All in One and Longlife Plus. Displays.



410 2007 Longlife All in One folding ruler, 2 m metric, 10 segments.

Material: Glass fibre reinforced polyamide. Scratch, weather and chemical resistant.

Joints: Play free, wear resistant and maintenance free joint with steel spring pin for constant tension. Usefull 90° snap-in position.

Scale: Deep embossed black scale in 1 mm increments. Every 10 cm is marked in red.

Accuracy: CE conformity, EU standard accuracy class III.

Extra: Readable from both sides through a second, backwards running scale (Recto Verso).
Depth measurement with push-out depth gauge.
Angle measurement with anchoring of depth gauge in fixation hole.

Order-No.	15	white	135	10
33232	15	white	135	10



410 2001 Longlife Plus folding ruler, 2 m, metric, 10 segments. With metal ends.





Material: Glass fibre reinforced polyamide. Scratch, weather and chemical resistant.

Joints: Play free, wear resistant and maintenance free joint with steel spring pin for constant tension. Usefull 90° snap-in position.

Scale: Deep embossed black scale in 1 mm increments. Every 10 cm is marked in red.

Accuracy: CE conformity, EU standard accuracy class III.

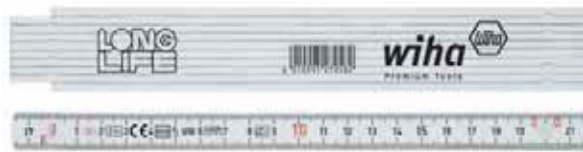
Extra: Wear resistant metal ends on the first and last segments. Readable from both sides through a second, backwards running scale (Recto Verso).

Order-No.				
27055	15	yellow	140	10
27059	15	white	140	10
27060	15	yellow/white	140	10

410 ... VH Sales counter display Longlife® folding rulers. Carton displays with 20 pcs. (2 m) or 54 pcs. (1 m).

Order-No.	Content	Quantity
33660	410 2007 2	20 Longlife® All in One, 2 m
33945	410 2001 1	20 Longlife® Plus, 2 m, yellow
34495	410 2000 2	20 Longlife®, 2 m, white
33946	410 1000 2	54 Longlife®, 1 m, white

Longlife.



410 2000 Longlife folding ruler, 2 m, metric, 10 segments.

Material: Glass fibre reinforced polyamide. Scratch, weather and chemical resistant.

Joints: Play free, wear resistant and maintenance free joint with steel spring pin for constant tension. Usefull 90° snap-in position.

Scale: Deep embossed black scale in 1 mm increments. Every 10 cm is marked in red.

Accuracy: CE conformity, EU standard accuracy class III.

Order-No.	15	yellow	140	10
27058	15	yellow	140	10
27057	15	white	140	10



410 1000 Longlife folding ruler, 1 m, metric, 10 segments.

Material: Glass fibre reinforced polyamide. Scratch, weather and chemical resistant.

Joints: Play free, wear resistant and maintenance free joint with steel spring pin for constant tension. Usefull 90° snap-in position.

Scale: Deep embossed black scale in 1 mm increments. Every 10 cm is marked in red.

Accuracy: CE conformity, EU standard accuracy class III.

Order-No.	13	yellow	45	10
27061	13	yellow	45	10
27062	13	white	45	10



410 1010 Longlife folding metre rule, 1 m, metric, 5 segments.

Material: Glass fibre reinforced polyamide. Scratch, weather and chemical resistant.

Joints: Play free, wear resistant and maintenance free joint with steel spring pin for constant tension. Usefull 90° snap-in position.

Scale: Deep embossed black scale in 1 mm increments. Every 10 cm is marked in red.

Accuracy: CE conformity, EU standard accuracy class III.

Order-No.	15	yellow	65	20
27063	15	yellow	65	20



Sale only in pack quantities!
Special scales available on request.